

ENERGY
EFFICIENT WINDOWS!



FORMTECH
FENÊTRES — WINDOWS



Manufacturer of
pour-in-place windows
EST. 1988



819 758-7382 | 1 888 388-1155
192, RANG 6, ST-ROSAIRE QC G0Z 1K0
WWW.FORMTECH-INC.COM

OUR FOUNDATION



Founded in Canada in 1988 by Jean-Guy Bergeron, Formtech. Windows is a 3rd-generation family company. For more than 35 years, the business has gone from strength to strength, becoming Canada's leading manufacturer of pour-in-place windows. We use our expertise to create and develop quality products that make formworkers' jobs easier.

Our story began in the late '80s. After founding 4 Seasons Ties, a formwork equipment company, Jean-Guy saw the opportunity to target a new need. He developed a foundation window that could be installed in the formwork system before pouring. The main advantage of this innovation was that it saved time. The window replaced the wooden frame previously installed to accommodate the window



AFTER casting. To manufacture and market this groundbreaking new product, he established Formtech Windows in Saint-Samuel and entrusted its management to his four children. To this day, the company offers the best window in its class on the market. Jean-Guy passed away in 2017, but Formtech Windows has continued to build its reputation throughout Canada and the United States under the leadership of his grandsons.

"As pioneers and leaders in our field, our mission at Formtech Windows is to facilitate the work of contractors and formworkers by manufacturing and distributing basement windows that meet their needs and those of their clients. As such, we're fully committed to meeting the highest standards of performance, quality and durability on the market."

819 758-7382 | 1 888 388-1155

INFO@FORMTECH-INC.COM

192, RANG 6, ST-ROSAIRE QC G0Z 1K0

WWW.FORMTECH-INC.COM

TABLE OF CONTENTS



WINDOW MODELS	4
FEATRURES AND MORE	5
SLIDING TECHNOCLIP	6
TECHNOCLIP PARTS	11
SLIDING ISOFORM	12
ISOFORM PARTS	15
INSTALLATION GUIDE	16
WARRANTY	18
ECO-RESPONSIBILITY	19

MODELS



PERFORMANCE SERIES

Our **TECHNOCLIP** line of products

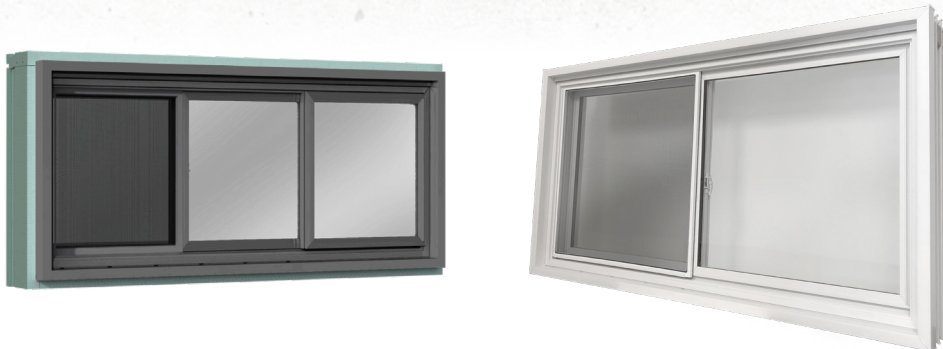
Is the best in its class on the market. Its energy and physical performance are second to none. What's more, there are only two parts to assemble, so it's certainly the easiest and quickest to install!



ECONOMY SERIES

The **ISOFORM** line of products

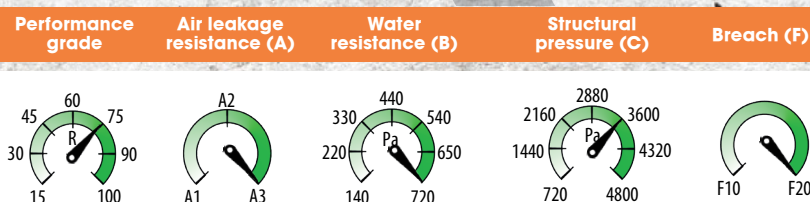
Sold throughout North America for over 20 years. These windows have proven durability and performance. They are among the best pour-in-place windows on the market and are very competitively priced.



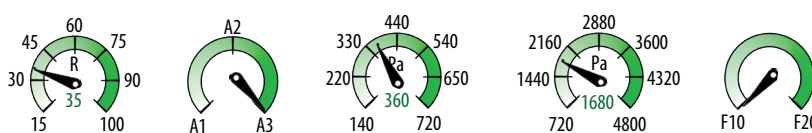
PERFORMANCE & FEATURES



*TECHNOCLIP



*ISOFORM



*Window format tested: 64"x 36" 2 sections

FEATURES	ISOFORM	TECHNOCLIP	NOTES
Color options			Inifinite possibility of color options.
Welded frame corners			Makes the frame robust and prevents concrete from entering inside the frame during the pouring.
Insulating strip around the frame			Provides an R5 insulating value or greater and eliminates the thermal bridge between the concrete and the frame.
Drywall channels (for 1/2" & 3/4")			Channels in the frame are suitable for drywall installation or wood jamb extensions.
Welded sashes / panes			Improves physical performances.
Triple glass available			Improves thermal performances.
Sashes/ panes mounted onto roller bearings			Offers smooth and easy sash/pane sliding.



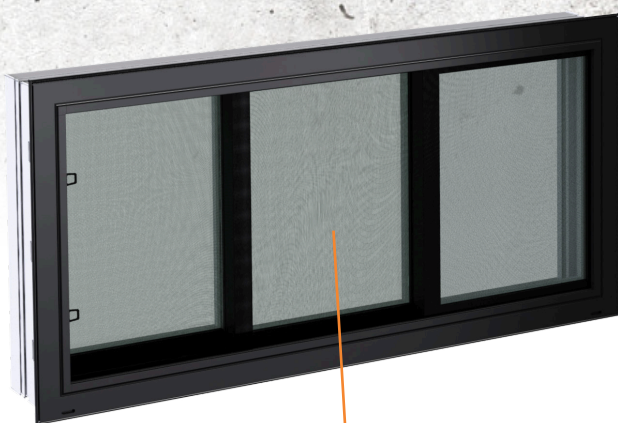
PERFORMANCE SERIES

TECHNOCLIP



CA-USA
PATENT PENDING

TECHNOCLIP



Full size screen

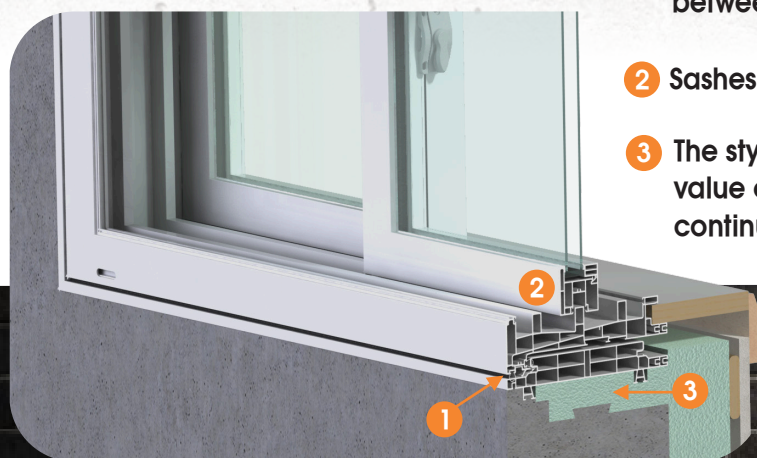
The universal base is the part that is poured in place. It is made to receive the window in only a few "clicks".



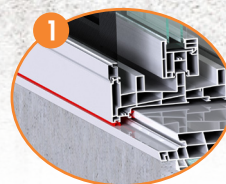
THICKNESS AVAILABLE :

8", 10" & 12" | 7 ½ ", 9 ½ " & 11 ½ "

Ref. art. FT-9.7.6.1 GCR

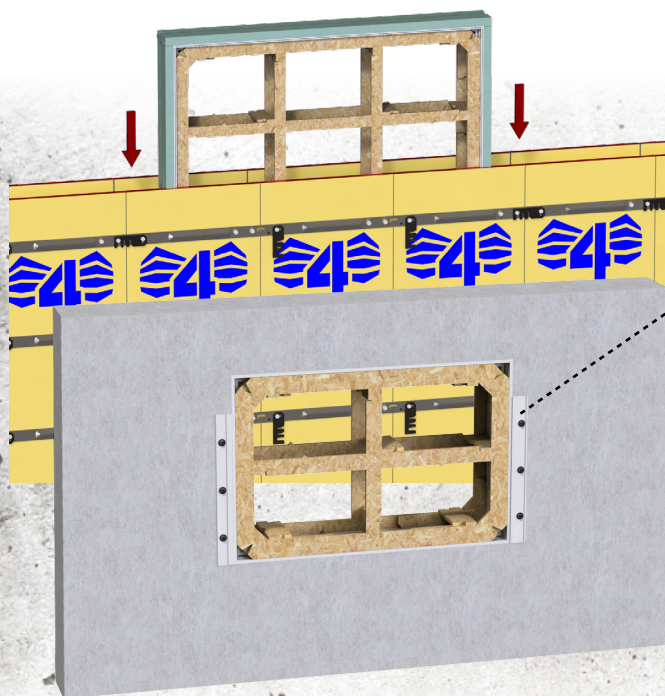


- 1 Double weatherstripping provides outstanding sealing properties against infiltration between both parts once assembled.
- 2 Sashes mounted onto brass roller bearings.
- 3 The styrofoam offers an 0,88 Rsi (R5) value or greater and ensures the continuity of the wall insulation.

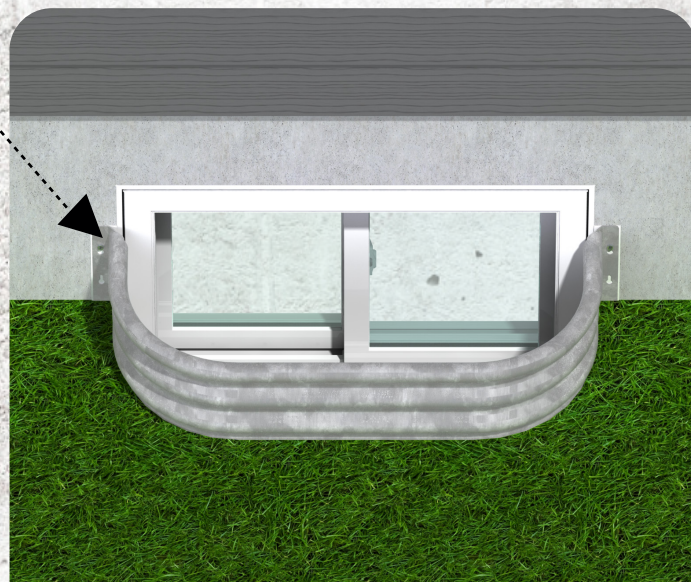


CA-USA
PATENT PENDING

TECHNOCLIP



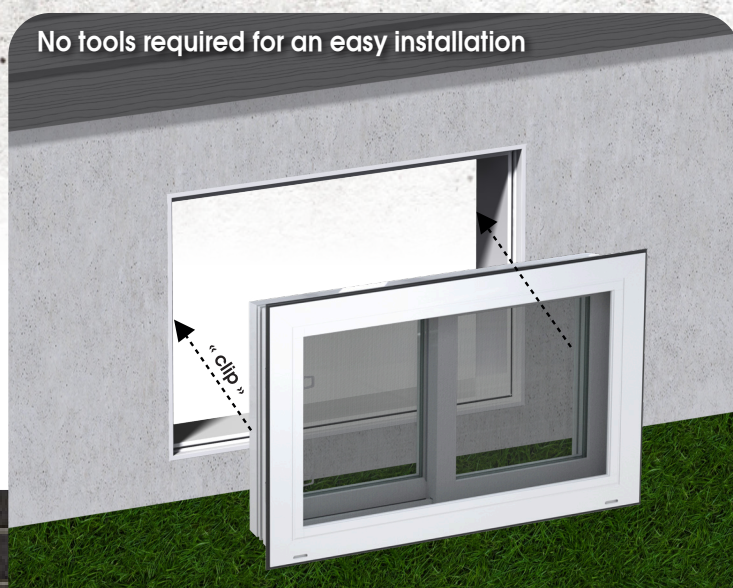
No risk of track breakage during the construction process



Window well hanging brackets are "clipped" on the base as an option.

FORMTECH
FENÊTRES - WINDOWS

No tools required for an easy installation



"Clip" the window in the universal base for a quick installation.

Detailed installation instructions, page 15-16

CA-USA
PATENT PENDING

TECHNOCLIP



For insulated concrete forms CONSTRUCTIONS



- ▶ Styrofoam strip around the perimeter of the universal base for ICF.
- ▶ Quick and easy installation.
- ▶ Greater insulation than wooden buck.
- ▶ Fits with most of ICF insulation blocks.



It interlocks into 2,5" to 2,75" thickness icf blocks.
Allows for concrete walls from 6" to 6,25" thick.



Sideview

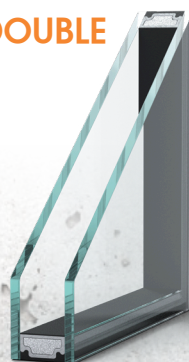
CA-USA
PATENT PENDING

TECHNOCLIP

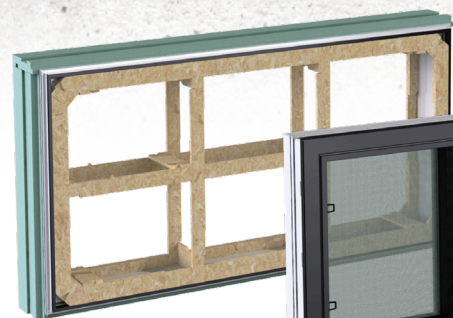


Glass options

DOUBLE



TRIPLE



Sizes	2 sections	Egress Sizes	3 sections	Egress Sizes
36" x 24"	X			
36" x 32"	X			
47" x 24"	X			
47" x 32"	X		X	X
47" x 36"	X	X	X	X
56" x 24"	X		X	X
56" x 32"	X	X	X	X
56" x 36"	X	X	X	X
64" x 32"	X	X	X	X

Custom sizes upon request.

	U Factor	SHGC	VT	CR	ER
Double glass	0,29 (1,64)	0,55	0,61	59	35
Triple glass	0,19 (1,09)	0,39	0,57	71	39

COLOR OPTIONS

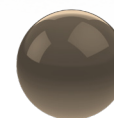
Painted (popular colors) :



Black



Charcoal grey



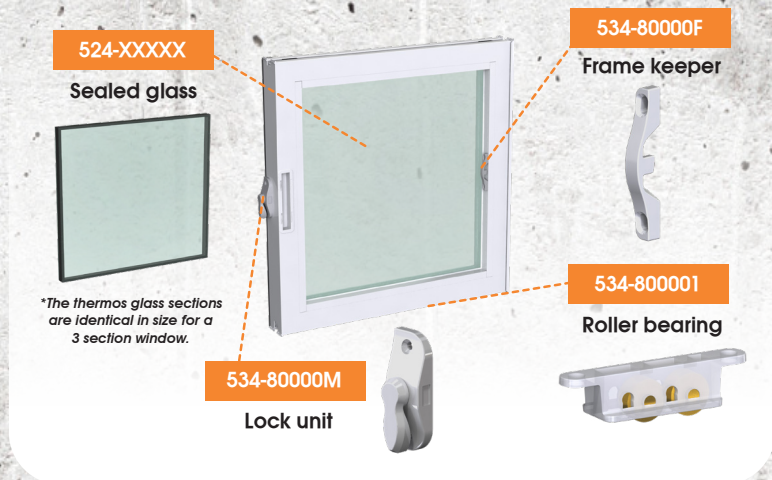
Commercial brown



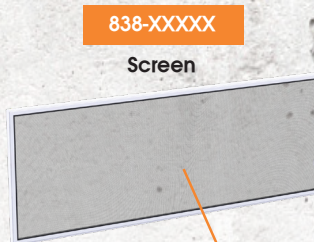
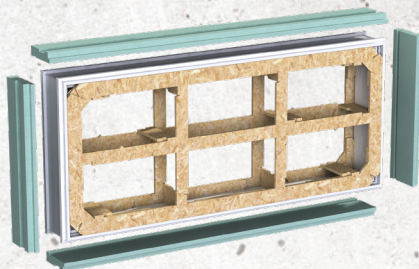
THICKNESSES AVAILABLE :

8", 10" ou 12" | 7 1/2", 9 1/2" ou 11 1/2"

TECHNOCLIP PARTS



100-XXXXX
Universal base



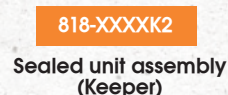
838-XXXXX
Screen



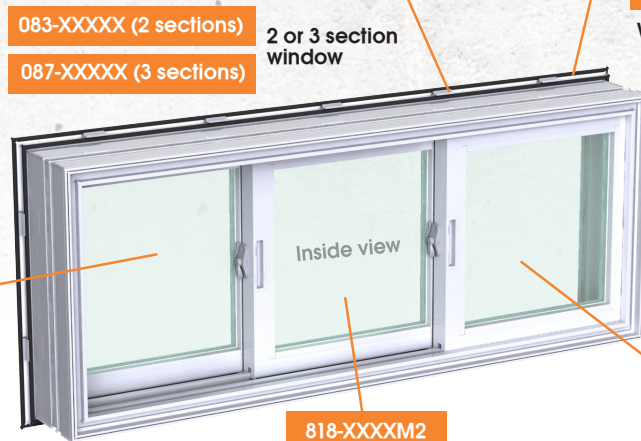
808-XXXXX
2 or 3 sections
frame assembly



514-000025
Window frame
clip



818-XXXXK2
Sealed unit assembly
(Keeper)



083-XXXXX (2 sections)
087-XXXXX (3 sections)
2 or 3 section
window



818-XXXXV2
Sealed unit assembly (Lock)



*Part available with no glass.

818-XXXXM2
Sealed unit assembly (Center)



ISOFORM

ECONOMY SERIES

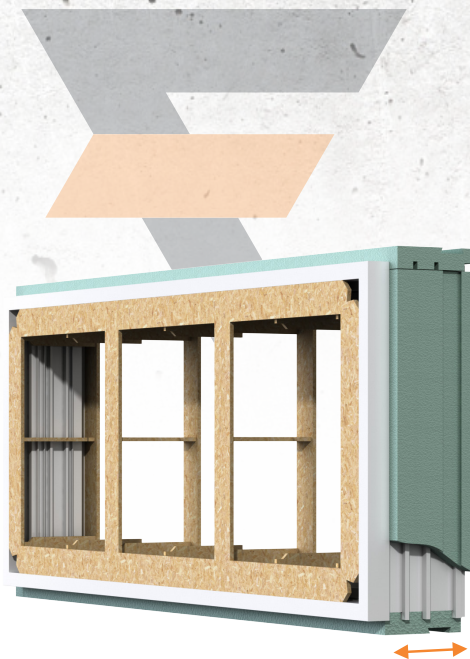


ISOFORM

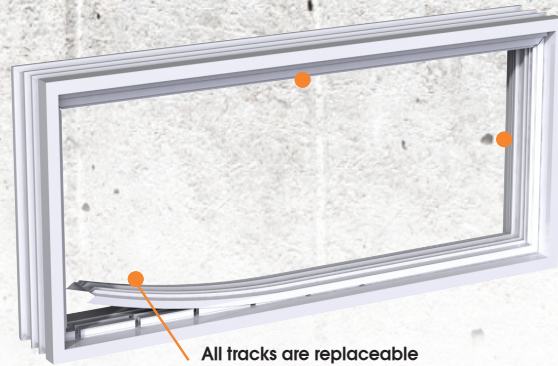
Sold throughout North America for over 20 years!



SLIDING WINDOW



THICKNESSES AVAILABLE :
8", 10" ou 12" | 7 ½", 9 ½" ou 11 ½"



All tracks are replaceable

Ref. art. FT-9.7.6.1 GCR

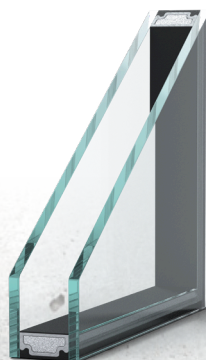


- 1 Channels in the frame are suitable for drywall installation or wood jamb extensions.
- 2 The styrofoam offers an 0,88 Rsi (R5) value or greater and ensures the continuity of the wall insulation.



ISOFORM

Sold throughout North America for over 20 years!



DOUBLE GLASS

U Factor	0,29 (1,65)
SHGC	0,55
VT	0,58
CR	57
ER	35



Sizes	2 sections	Egress Sizes	3 sections	Egress Sizes
32"x 16"	X			
32"x 20"	X			
36"x 24"	X			
48"x 24"	X			
48"x 32"	X		X	X
56"x 24"	X		X	X
56"x 32"	X	X	X	X
Custom sizes upon request.				

COLOR OPTIONS

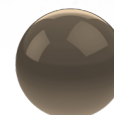
Painted (populars colors) :



Black



Charcoal grey



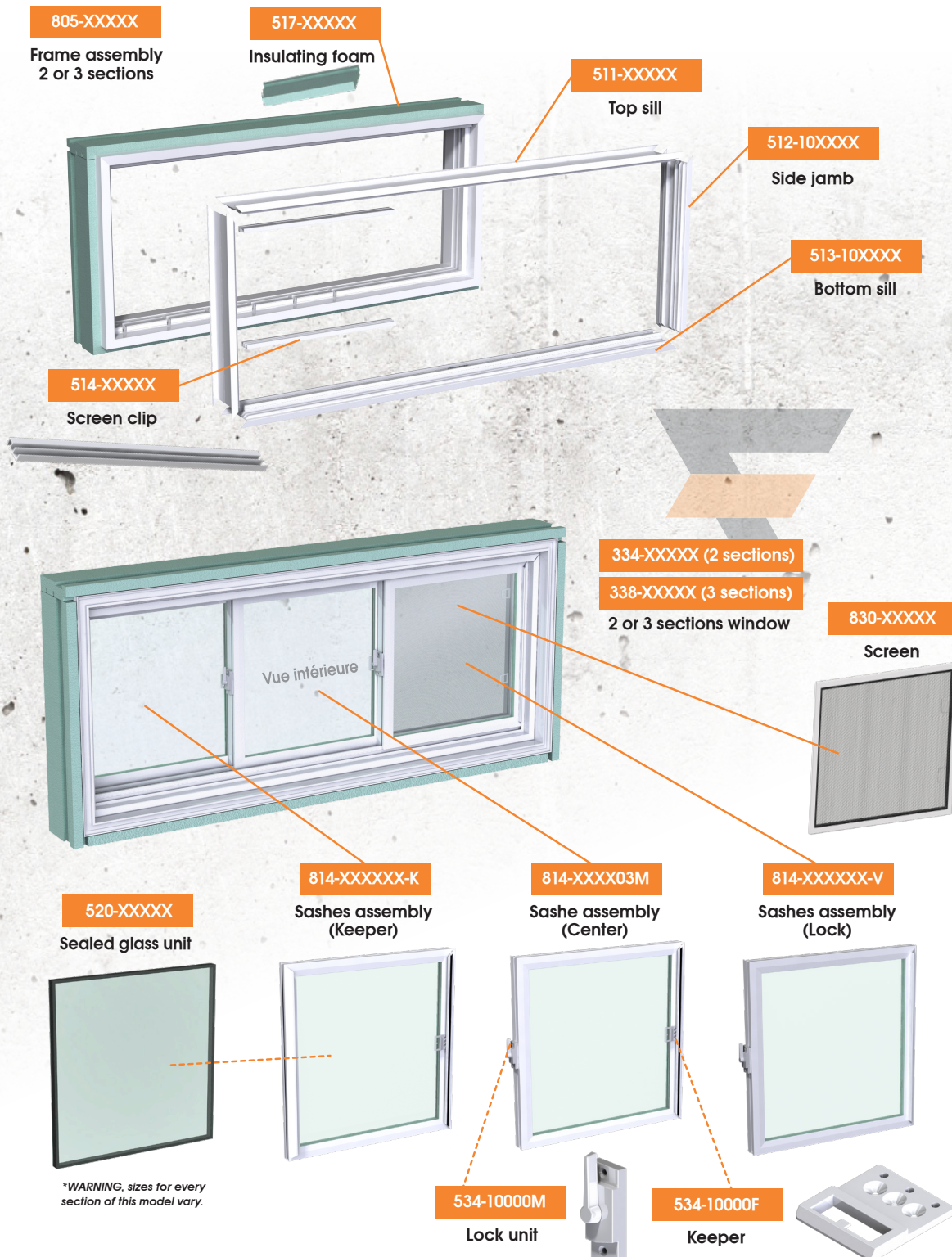
Commercial brown



THICKNESSES AVAILABLE :

8", 10" ou 12" | 7 ½", 9 ½" ou 11 ½"

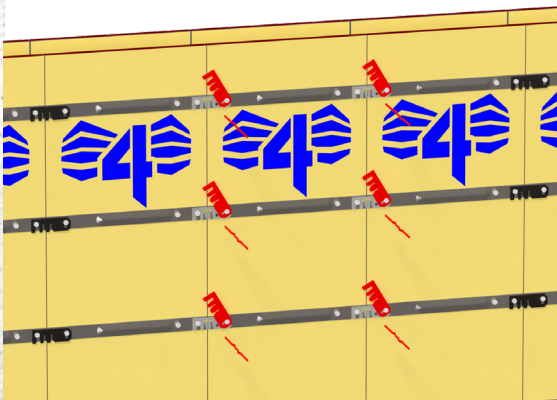
ISOFORM PARTS



INSTALLATION GUIDE

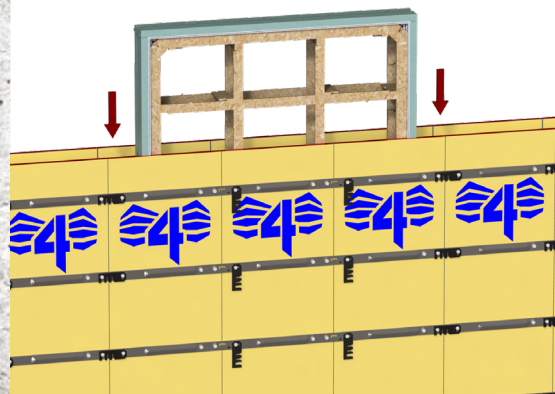
STEP 1

Unlock the latches and remove ties.



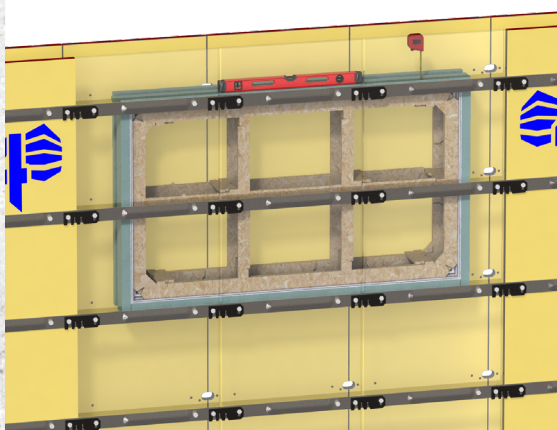
STEP 2

Slide window down into forms.



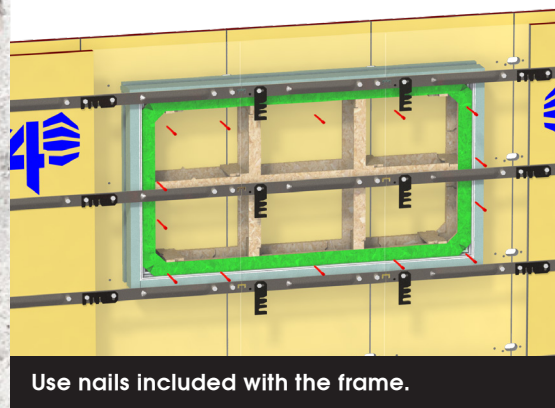
STEP 3

Place the base at the required height and level it.



STEP 4

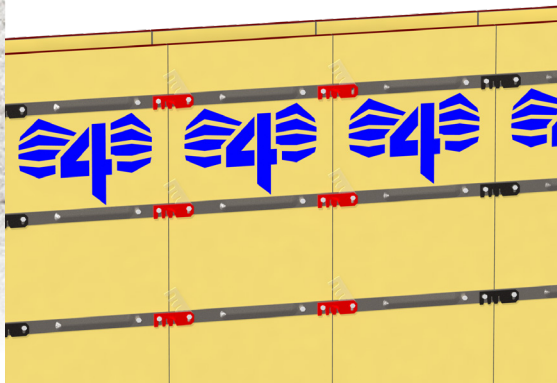
Screw or nail through formwork into the wooden frame on both sides.



Use nails included with the frame.

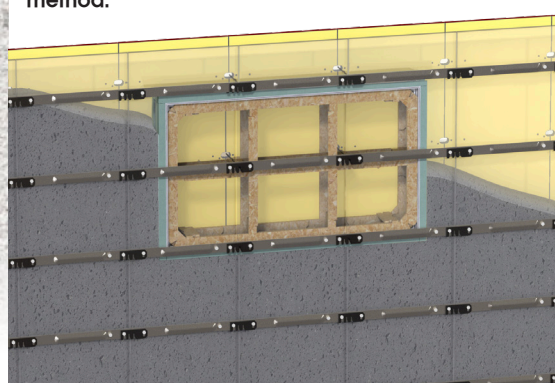
STEP 5

REINSTALL ties. Lock the latches.



STEP 6

Pour concrete according to the recommended method.



INSTALLATION GUIDE

2nd Method (optional for big sized windows)

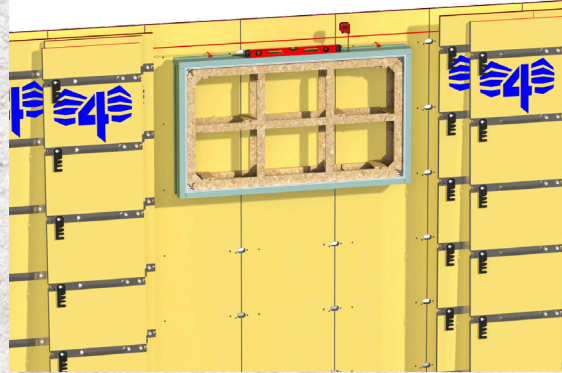
STEP 1

Unlock the latches, remove ties in order to remove the inside panels where the window will be fixed.



STEP 2

Place the base at the required height and level it.



STEP 3

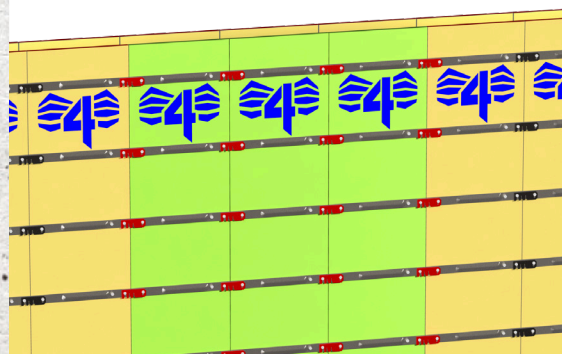
Carefully remove the protective film. Nail through the inside **face** of the wooden brace through the formwork. Stick the film back in place.



Use nails included with the frame.

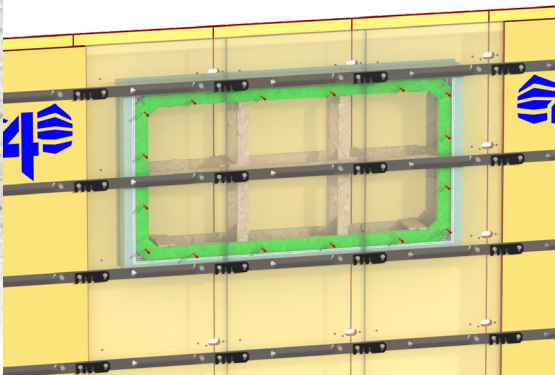
STEP 4

Reinstall formwork panels, reinsert the ties and lock the latches.



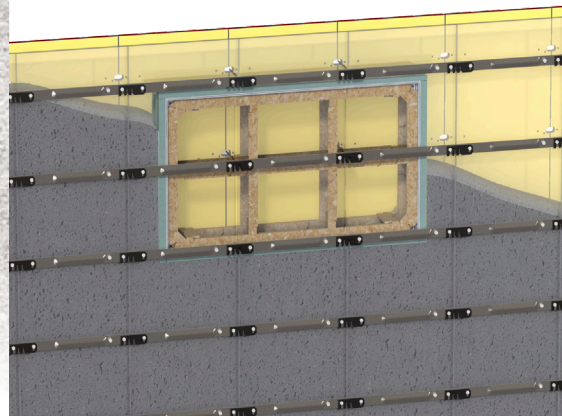
STEP 5

Screw or nail through formwork into the wood bracing. Measure carefully to locate wood bracing to avoid any damage to the base.



STEP 6

Pour concrete according to the recommended method.



WARRANTY

THERMOS

All sealed units are guaranteed, under normal conditions, for a period of ten (10) years from the date of installation. This coverage protects you against the formation of a film or dust on the internal surfaces of the glass, caused by a leaking seal (not by broken glass) and constituting a significant obstruction of vision. Thermal cycle breakages are also covered by the warranty when the constraints below are respected.

THE WARRANTY IS SUBJECT TO THE FOLLOWING CONDITIONS :

- A – The installation was carried out as directed.
- B – The insulating glass was not damaged during handling.
- C – The glass pane has not been subject to physical or thermal constraints.
- D – Conditions of sale have been fully met.

N.B. : Our responsibility is limited to providing new insulated glass panes. (Excluding installation and shipping costs to destinations other than our warehouses) For delivery to destinations other than our warehouses, shipping costs must be paid prior to item shipment.

CONSTRAINTS

It is recommended that adequate air circulation be maintained on the inner surface of the glass panes to reduce heat stress and prevent breakage. In cold weather, keep blinds, curtains and drapes away from the glass panes. To prevent the concentration of heat on the glass, avoid applying any cardboard, paper, poster or decorative objects to the glass. Coatings or films applied after installation will render the warranty null and void. Hot air sources should be placed a minimum of 50 mm from the glass and should not be aimed directly at the glass. Tinted or patterned glass panes require greater caution, since they heat up far more than clear glass panes when exposed to sunlight. Make sure to follow these recommendations to prevent thermal breakage.

CONDENSATION

Condensation on the surface of the insulating glass inside a room is the first visible sign of excessive humidity. Such condensation needs to be addressed to prevent mold and increase comfort level. It is recommended that humidity levels be reduced when outside temperatures are low.



CERTIFICATIONS



ECO-RESPONSABILITY



Approximately 90% of frame production waste is reused in the manufacturing process. To do this, we collect all PVC waste from window manufacturing, granulate this waste and reuse it to manufacture the various extrusion profiles needed to fabricate our windows.

We reduce our wood consumption by approximately 15% by using plywood sheets to protect the wood during transport. Back at the plant, we recycle these sheets to produce the wood supports we need for our windows. These temporary supports stiffen the frame so it remains straight when subjected to concrete pressure during casting.

We're also on the verge of finalizing a new process that will eliminate the need to paint colored windows. Process is known as "capstocking." It involves introducing a thin layer of colored powder into the extrusion line, which is then spread over the window surface. This process has many benefits, but above all it eliminates all VOC emissions from painting, which are harmful to the environment.

All extrusion profile cooling systems are closed-loop systems, which continuously reuse a small quantity of water instead of wasting one of our most precious natural resource: freshwater. Without these closed loop systems, millions of litres of water would be wasted every year.



FORMTECH
FENÊTRES — WINDOWS



819 758-7382 | 1 888 388-1155
192, RANG 6, ST-ROSAIRE QC G0Z 1K0

WWW.FORMTECH-INC.COM